

Complete 360° Urine Collection

CareDry[®] is designed to deliver more complete urine collection with its 360° design.

- Circumferential Design for Superior Incontinence Control
- Optimal Leak Protection with Compassionate Collection
- Enhanced Certainty for Simplified Nursing and Patient Care



DEMO

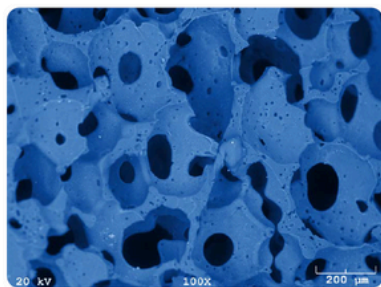


WEBSITE



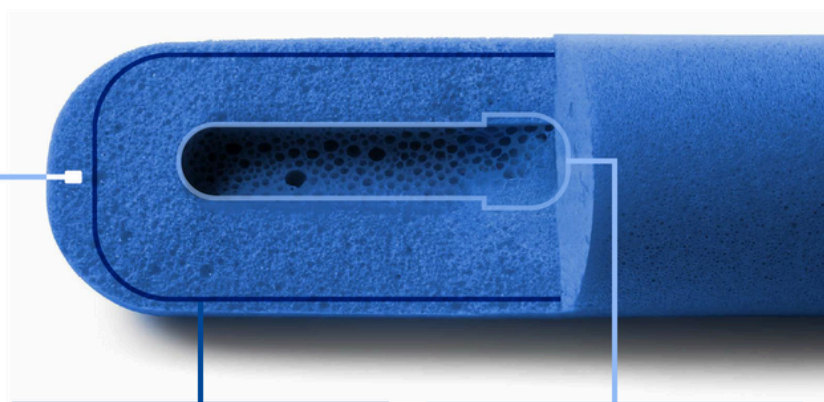
The CareDry[®] Difference

Three Phases of Circumferential Suction



1. Captures

Hydrophilic, antimicrobial infused foam holds 2x its original dry weight in liquid, when oriented vertically, for maximum containment



2. Transfers

Optimal suction effect is distributed evenly through the circumference of the sponge to maximize collection pathway

3. Removes

Continuous, high-flow suction removes collected fluid quickly and completely

360-Degree Suction

Optimal pore sizes and foam structure offer double the surface area to let nurses deliver more complete suction and urine collection.

Anatomically Conforming

Medical-grade foam protects against leaks in any position by contouring to the patient's unique body shape.

24 to 48-hour Change Interval*

Antimicrobial sponge actively inhibits harmful bacteria formation on the sponge**, allowing for extended patient use.

Product Ordering

Description	Part Number	Ordering
CareDry [®]	7660	20 units/box

* indicated for up to 48 hrs of use, compared to 8-12 hr change interval of other female external catheters

** data on file with Boehringer Laboratories

