

CareDry® Shield™

- **Transparent Design** for Visible Anatomy and Accurate Placement
- **Silicone-Based Adhesive** for Secure, Skin-Friendly Application
- **Innovative Venting System** to Prevent Occlusion and Maintain Comfort

CareDry® Shield™: Advancing Urine Management Solutions

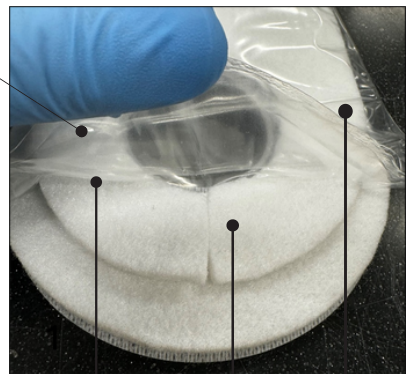
CareDry® Shield™ is thoughtfully designed to tackle the specific challenges of managing male urinary incontinence in hospital environments. Its adaptable, secure fit ensures effective urine management without compromising patient comfort.

Serving as a safe and effective alternative to traditional external collection devices—and, when clinically appropriate, indwelling catheters—CareDry® Shield™ utilizes high-capacity, absorbent materials and a gravity-independent design to minimize urine overflow and support patient dryness.

CareDry® Shield™—setting a new standard in urinary incontinence care with comfort, performance, and protection.

Clinical Support & Training

- Dedicated team of Clinical Account Managers (CAMs) – full-time RNs
- On-site throughout evaluation
- Assist with training and education
- Ensure staff and patient satisfaction
- Direct support of Evaluations, Conversions, and Post Conversion Support
- Post Sale Education

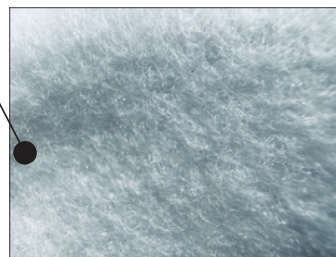


Bridge

Internal Felt

External Felt

- Air travels from room into External Felt
- Air travels through Bridge into Internal Felt



Unique Polyester (PET) Felt



Product Ordering

Description	Part Number	Ordering
CareDry® Shield™	7680	20 units/box